

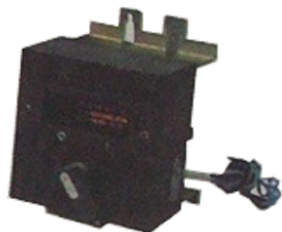
MOTOR OPERATION MECHANISM

CDM applicable for ADM1-63A/100A/225A CD applicable for ADM1-400A/630A/800A

Application

CDM electromagnet operation mechanism (Applicable for ADM11-63,100,225A)

CD motor operation mechanism(Applicable for ADM1-400,630,800A)



CDM

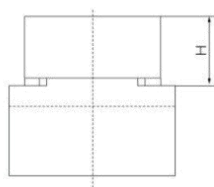


CD

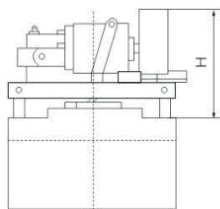
Main Technical Data

Applicable for MCCB	Starting Current(A)		Service Life(TIMES)		Installation H(mm)	
	CDM	CD	CDM	CD	CDM	CD
ADM1-63	≤ 5		10000		91	
ADM1-100	≤ 7		10000		91	
ADM1-225	≤ 8.5		8000		101	
ADM1-400		≤ 5.7		5000		141
ADM1-630		≤ 5.7		5000		141
ADM1-800		≤ 7.5		3000		150

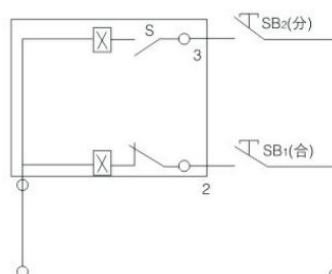
Dimension and Wiring Diagram



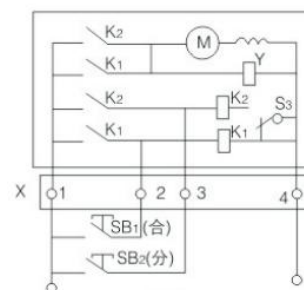
CDM



CD



CDM



CD

Installation H

Wiring Diagram